



PORTLAND STATE UNIVERSITY INTERNATIONAL SPECIAL PROGRAMS

DISCOVER PORTLAND! SUMMER 2021

AUGUST 9 - AUGUST 20, 2021 (2 WEEKS)

(ここに記載されています日程・時間は日本時間のもので)

\$550

Register before July 15, 2021 to receive this special price*!

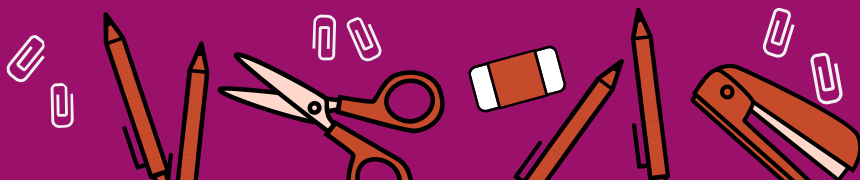
※締切日は大阪学院大学に従ってください。

DAILY SCHEDULE:

- 8:15-9:45am LIVE English Communication Class
- 10:00-11:30am LIVE Content Based Class of your choice*
- 11:30-12:00pm Lunch break
- 12:00-1:40pm Group Study & Conversation with Portland State University students**
(group study and conversation times are 45 minutes each with a 10 mins break)

*Content Based Class Choices: Discover Portland! (Portland Culture), Portland Food Studies, and Sustainable Portland (SDGs: 11 & 12)

**Conversation time with Portland State University Student will be in a small group setting.



CLASSES

English Communication Class:

- Making introduction, Asking and Answering Questions
- Vowel and Consonant Pronunciation, Sentence Stress and Intonations
- Describing Activities & Experiences, Sharing Opinions
- Portland and American Culture
- Cultural Comparisons & Contrasts, etc.

Content Based Classes*:

✓このコースを受講します。

1. Discover Portland (Portland Culture)!

- What is Pop Culture?
- Keep Portland Weird, Portland Hipsters
- Recycling & Upcycling
- Beyond Starbucks, Cheap Eats
- Artsy Portland, Art Power in Portland

2. Portland Food Studies

- The Food System
- Food and Community
- Portland Food Scene
- Food and Social Issues
- Food and Non-Profits

3. SDGs #11&12: Sustainable Portland

- Sustainable Fashion
- 4Rs: Reduce, Reuse, Recycle, Rot
- Sustainable Cities
- Sustainable Communities
- Sustainable Domolition

*Due to the uncertainty about potential class sizes with this online format, we may only be able to offer one or two "plus" course(s). If we have to cancel your preferred class, we will let you know as soon as possible.

** Class contents are subject to change.

ONLINE APPLICATION



<http://bit.ly/Discover-Portland>

Please use your smartphone to scan the QR code, or visit <http://bit.ly/Discover-Portland> to fill out the online application form.

Please enter answers to all of the questions in ENGLISH. If you don't have an answer for any specific question, type "none" in the blank space.

プログラム申し込み内容ですが、英語か日本語で質問の表記をいたしております。どちらかを選んで、質問にお答えください。日本語表記での質問にお答えの際にも、皆様の回答は英語でお願いいたします。オンラインでの申し込みが終了しましたら、当校から皆様へプログラム費用の支払いに関するメールが届きます。プログラム費用の支払いが完了するまでは、皆様のプログラムへの申し込みは完了したとみなされませんので、ご了承ください。

Once you complete the online application questions, we will send you a brief email that includes the online payment instructions. Your application is not complete until you make the online payment.

If you have any questions or troubles applying online, please feel free to contact us at isp.programs@pdx.edu

日本語でも対応可能です!



<http://www.pdx.edu/intl-special-programs/>



www.facebook.com/PSU.ISP



[@psu_isp](https://www.instagram.com/psu_isp)